

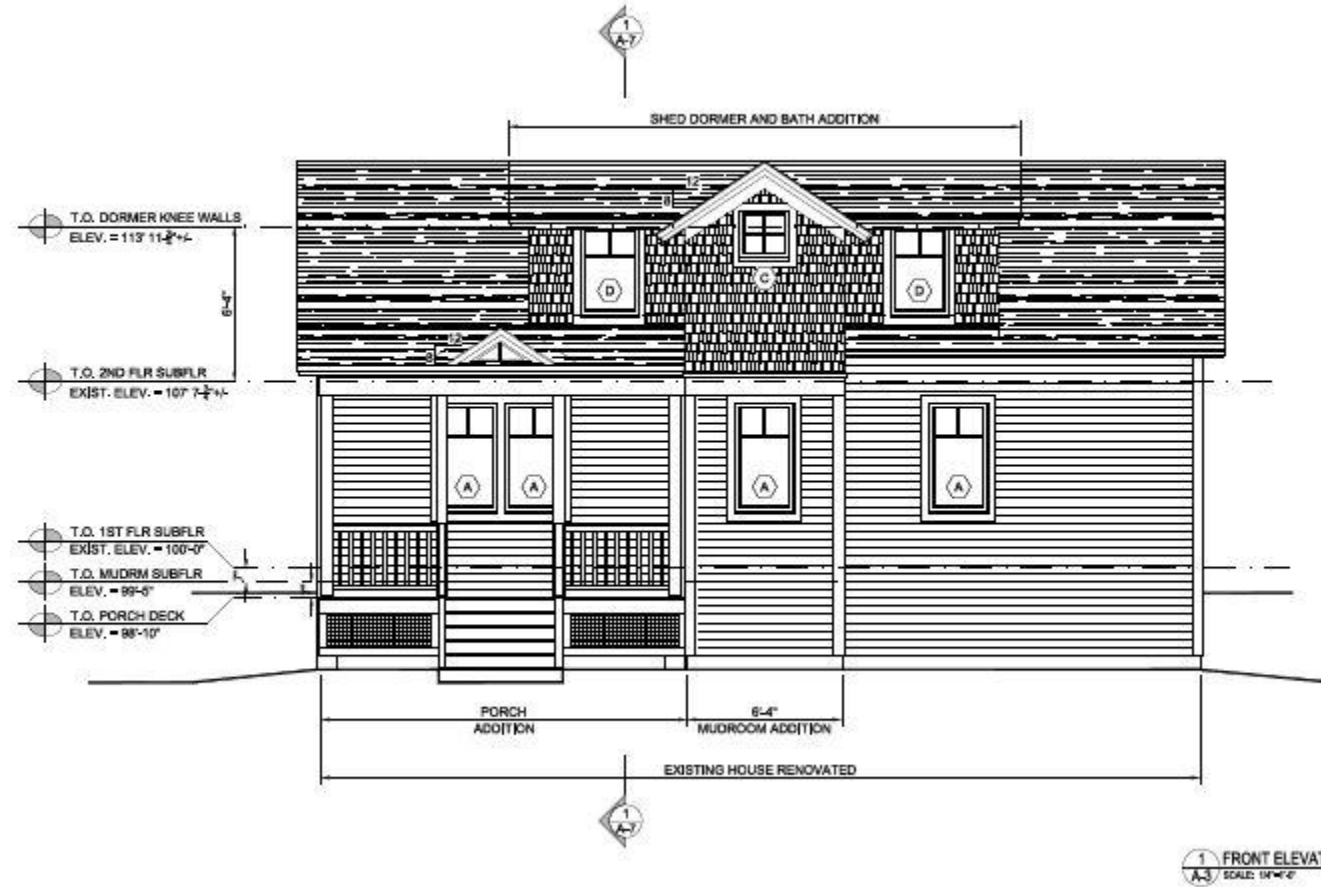


NECCO INC

NEW ENGLAND CONSTRUCTION CO.
Waitsfield, VT 802-496-4406 necco@gmavt.net

Better Building by Design 2014
Case Study
Waterbury, Vermont

Presented by Paul Sipple



1 FRONT ELEVATION
SCALE: 1/4" = 1'-0"





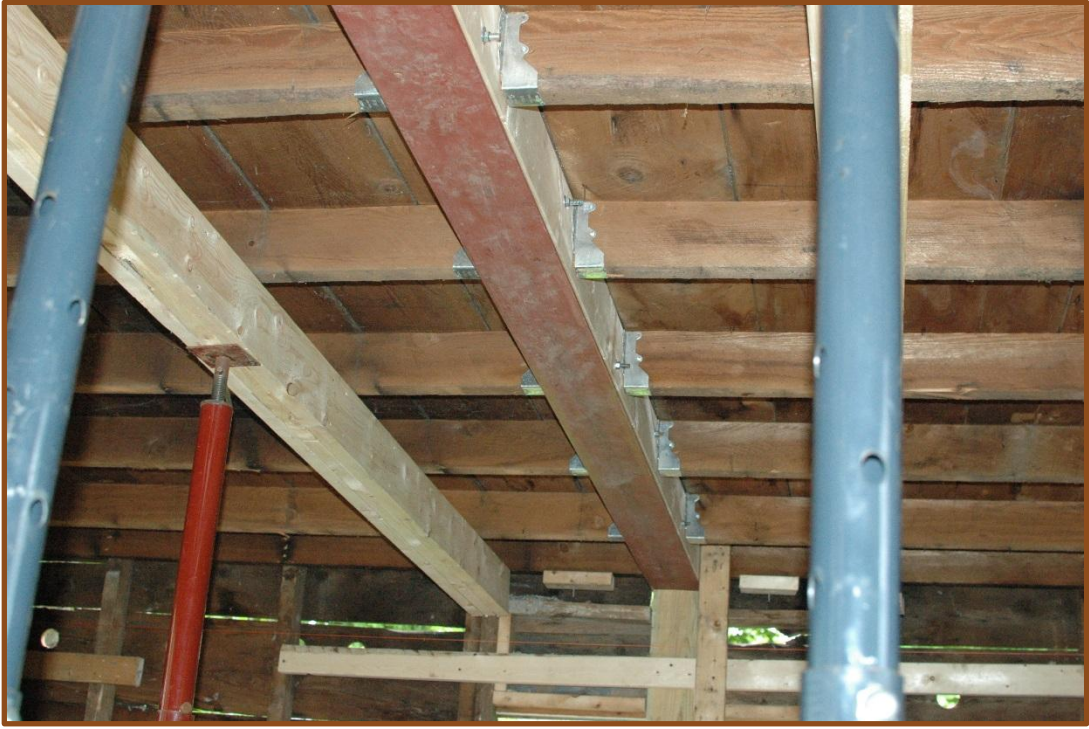






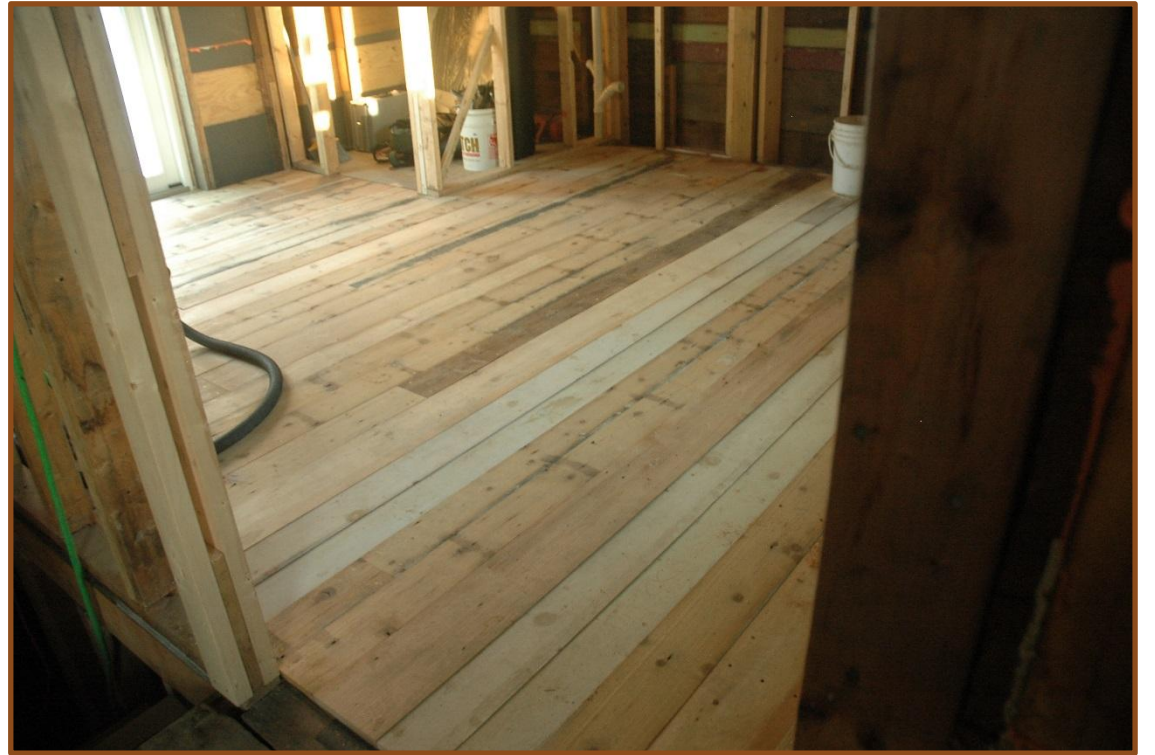




















COSTS

	Standard	High Performance
Wall Insulation	4,282.00	8,224.00
Roof Insulation	4,022.00	6,670.00
Foundation Insulation	1,014.00	2,614.00
Air & Moisture:		
Panasonic fans	800.00	
Heat exchanger		6,200.00
Systems: solar hot water w/dump loop		6,800.00
Heat:		
Gas boiler, hot water, baseboard	8,200.00	
Mitsubishi Mini Split		3,800.00
Windows	2,000.00	3,200.00
	<hr/> 20,318.00	<hr/> 37,508.00

PERFORMANCE TO DATE

- Building is unoccupied.
- Building is being heated by heat pump.
- Solar panels send 100% of heat to basement slab.
- Preliminary whole house infiltration was .92 ACH at 50 Pascals.

LESSONS LEARNED

- Buy a better building.
- Re-using material is expensive.
- Using salvaged material is expensive.